

FRANZ WOHL & PARTNER PRÜFMASCHINEN GMBH

EISFELDER STRASSE 24, D-96528 SCHALKAU



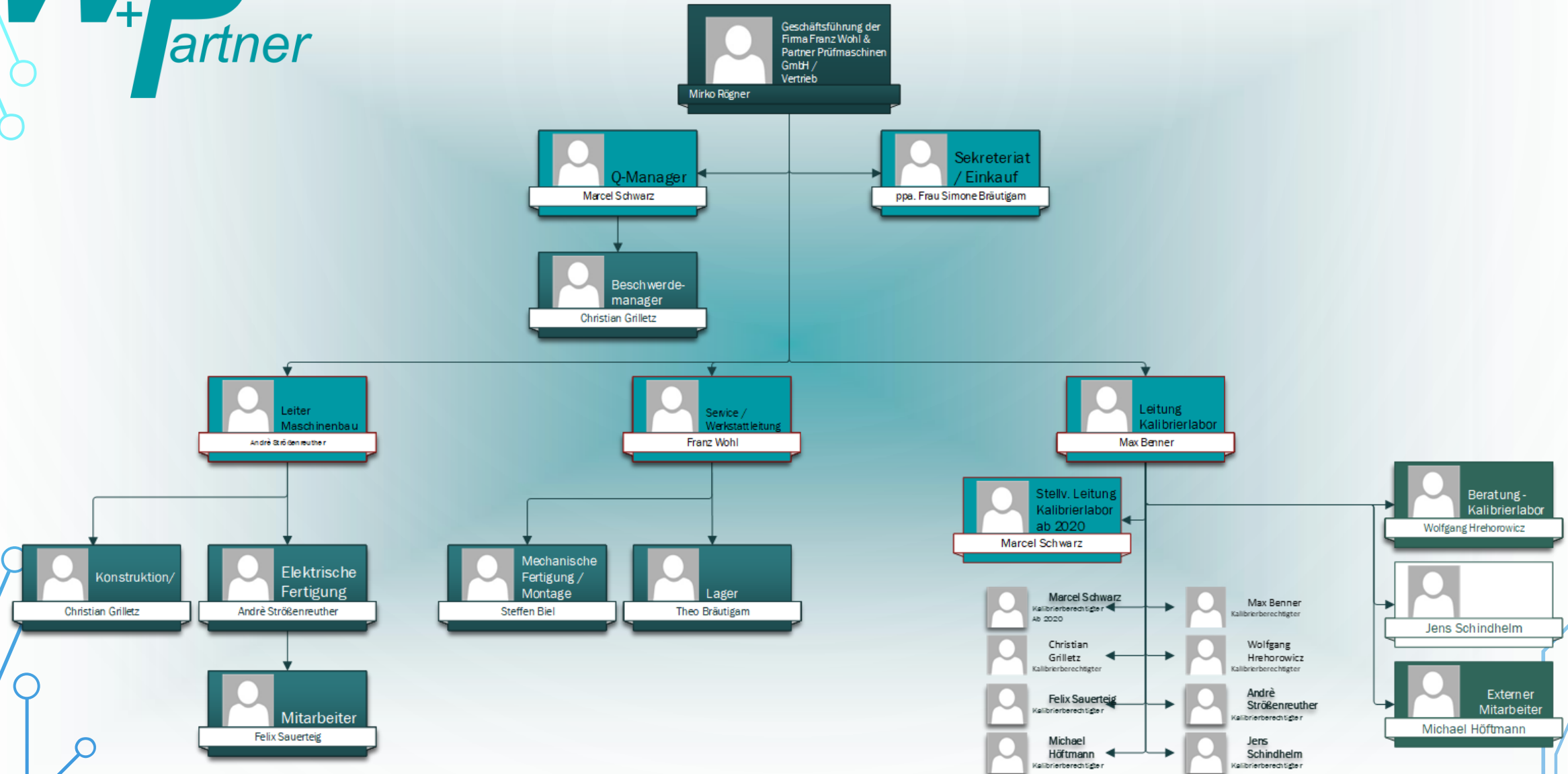
WHAT ARE WE DOING?



- DAkkS and firm calibration at material testing machines
- refitting of material testing machines
- engineering of special machines
- stabilization of mechanic, hydraulic and pneumatic clamping tools
- maintenance and repair service
- bringing machines into service and teaching customers

Organigramm

Stand 19.08.2019 Rev. 2

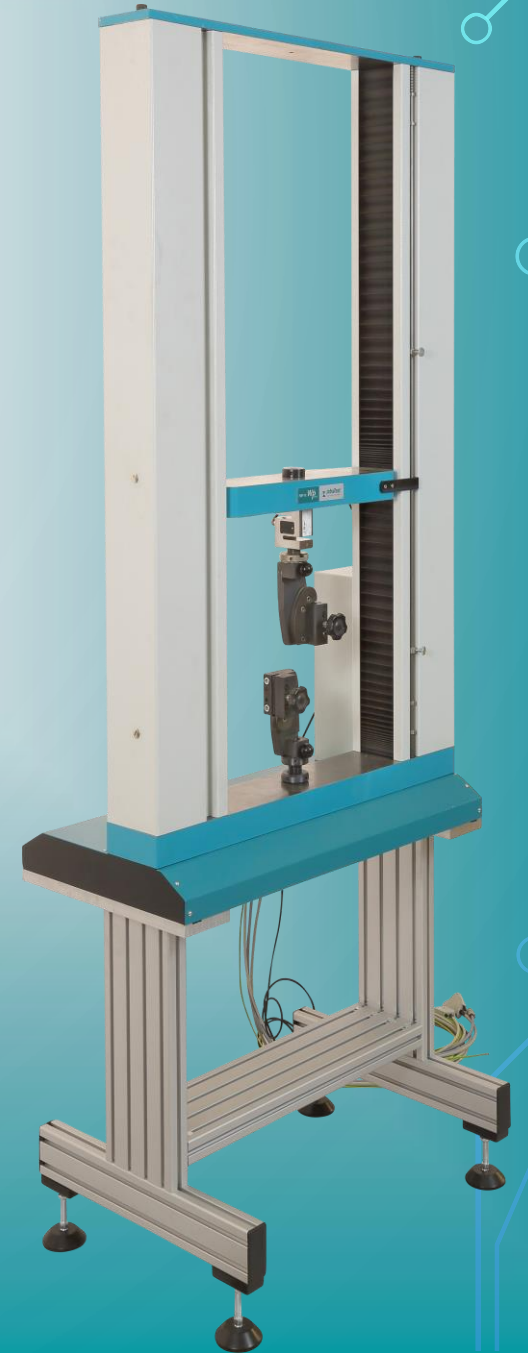




FWP 5-30

- all-rounders
- robust
- Portable or
- Stationary
- multifunctional

Technical data				
Model	FWP 5	FWP 10	FWP 20	FWP 30
Nominal load	5 kN	10 kN	20 kN	30 kN
Width x Depth x Height	31,5 x 16,5 x 54,4 in			
Weight	ca. 310 lbs			
Test area	17,7 x 39,4 in (without load cell and grips)			
Travel path	33,5 in			
Max. Travel speed	19,5 in/min			
Crosshead resolution	≤ 1 µm			
Measuring range	1....100 % of the nominal load of used load cell			
Power supply	VA 250; 230V/50Hz			



one-site-calibrations D-K-17452-01-00

Measured variable / calibration object	Measuring range / span	Measuring conditions / method ²⁾	smallest specifiable measurement uncertainty ¹⁾	comment
Force (MTM) Force measuring devices of material testing machines after DIN 51220	50 N to 20 kN	DIN EN ISO 7500-1	0,24 %	with load cells(Class 1) in traction and compressive force direction
	20 kN to 100 kN		0,12 %	with load cells (Class 0.5) in traction and compressive force direction
	100 kN to 500 kN		0,24 %	with load cells(Class 1) in traction and compressive force direction
	0,1 N to 400 N		0,10 %	with loading bodies in traction and compressive force direction
Length (MTM) Length change measuring equipment of materials testing machines according to DIN 51220	0 mm to 60 mm	DIN EN ISO 9513	$1,5 \cdot 10^{-3}$ /, however not < 0,5 μm	Measuring principle: incremental, linear encoder /: measured length
	0 mm to 1200 mm		$3,0 \cdot 10^{-3}$ /, however not < 30 μm	Measuring principle: incremental encoders /: measured length

FWP 100-500

- robust
- Wide frame for bigger test items
- allowing to provide two test

Technical data	FWP 100	FWP 300	FWP 500
Model	FWP 100	FWP 300	FWP 500
Nominal load	100 kN	300 kN	500 kN
Width x Depth x Height	49,6 x 27,6 x 83,5 in	49,6 x 36,6 x 90 in	61 x 43,3 x 102,4 in
Weight	ca. 1918 lbs	ca. 3528 lbs	ca. 3528 lbs
Test area	22,8 x 43,3 in ¹⁾	25,5 x 49,2 in ¹⁾	25,5 x 59 in ¹⁾
Travel path	42,5 in	43,3 in	51,1 in
Max. Travel speed	19,5 in/min	7,8 in/min	7,8 in/min
Crosshead resolution	≤ 1 µm		
Measuring range	1....100 % of the nominal load of used load cell		
Power supply	3000 VA; 400V/60Hz ²⁾	3000 VA; 400V/60Hz ²⁾	6000 VA; 400V/60Hz ¹⁾

¹⁾ without load cell and grips

²⁾ firmly connected

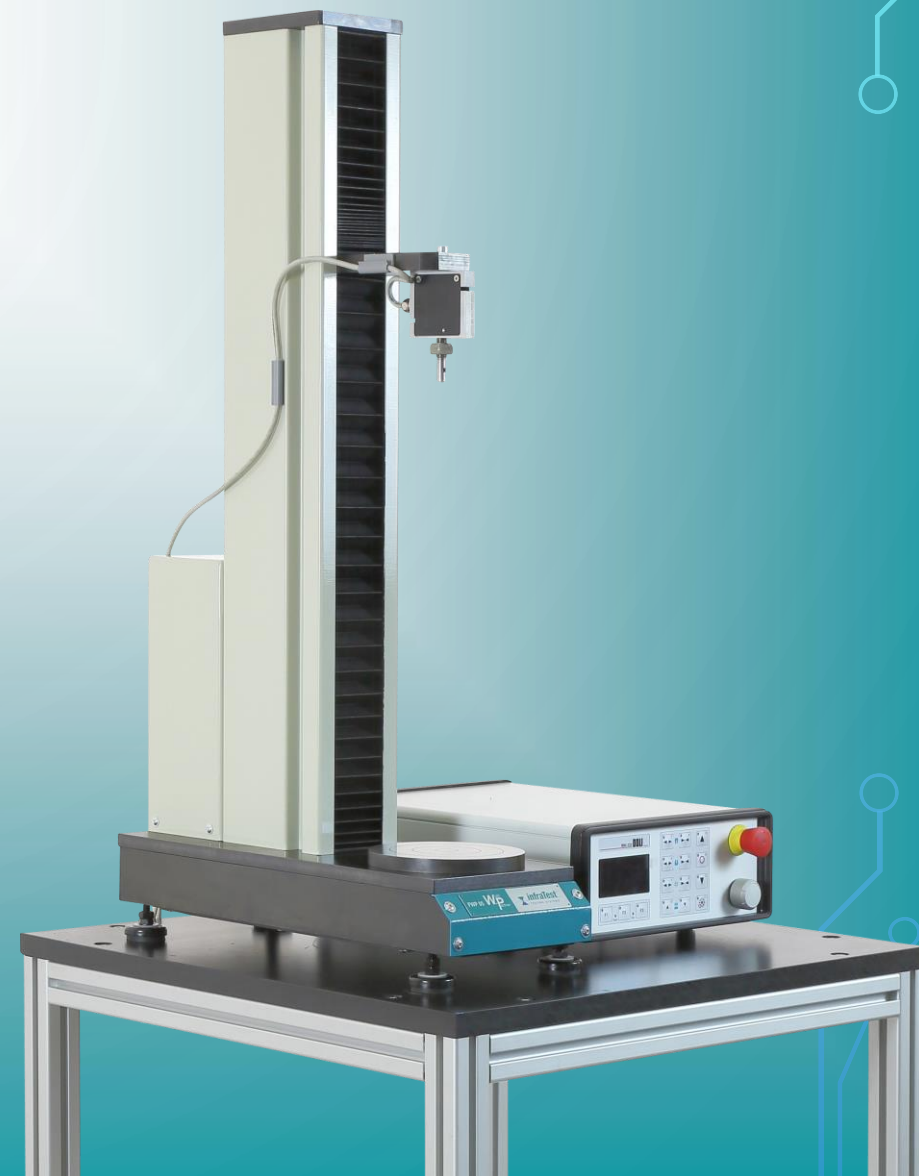


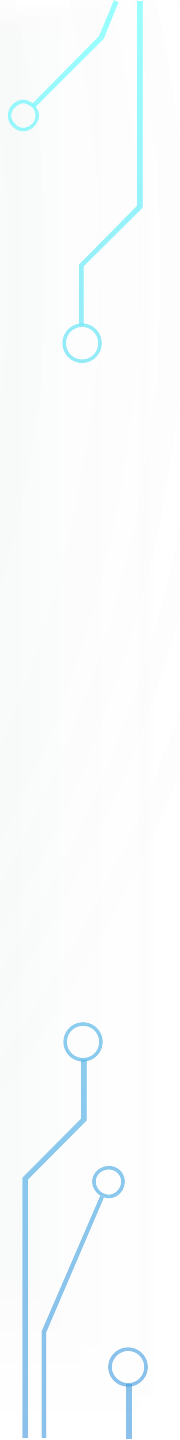
FWP 05

- Compact
- table machine
- table machine
- Applications are:
- Foams
- Elastomeres
- Plastics
- Paper
- Cardboards
- Textiles

Technical data	
Model	FWP 05
Nominal load	0,5 kN
Width x Depth x Height	6,7 x 18,1 x 32 in
Weight	ca. 77,2 lbs
Test area	4,3 x 27,6 in ¹⁾
Travel path	23,6 in
Max. Travel speed	19,5 in/min
Crosshead resolution	≤ 1 µm
Measuring range	1....100 % of the nominal load of used load cell
Power supply	VA 250; 230V/50Hz

¹⁾ without load cell and grips



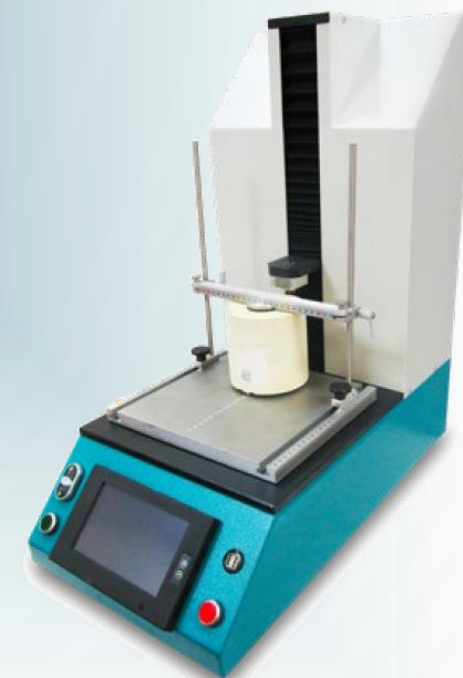


KAT 005

- special designed customer project.
- measure the edge stability
- traversing table
- 2-axis testing machine
- 3-axis force sensor possible

Technical data	
Model	KAT 005
Nominal load	50 N
Width x Depth x Height	138 x 248 x 283,5 in
Weight	ca. 121,5 lbs
Test area	98,4 x 94,5 in ¹⁾
Travel path	141,5 in
Max. Travel speed	19,5 in/min
Crosshead resolution	≤ 1 µm
Measuring range	1 ... 100 % of the nominal load of used load cell
Power supply	VA 250; 230V/50Hz

¹⁾ without load cell and grips



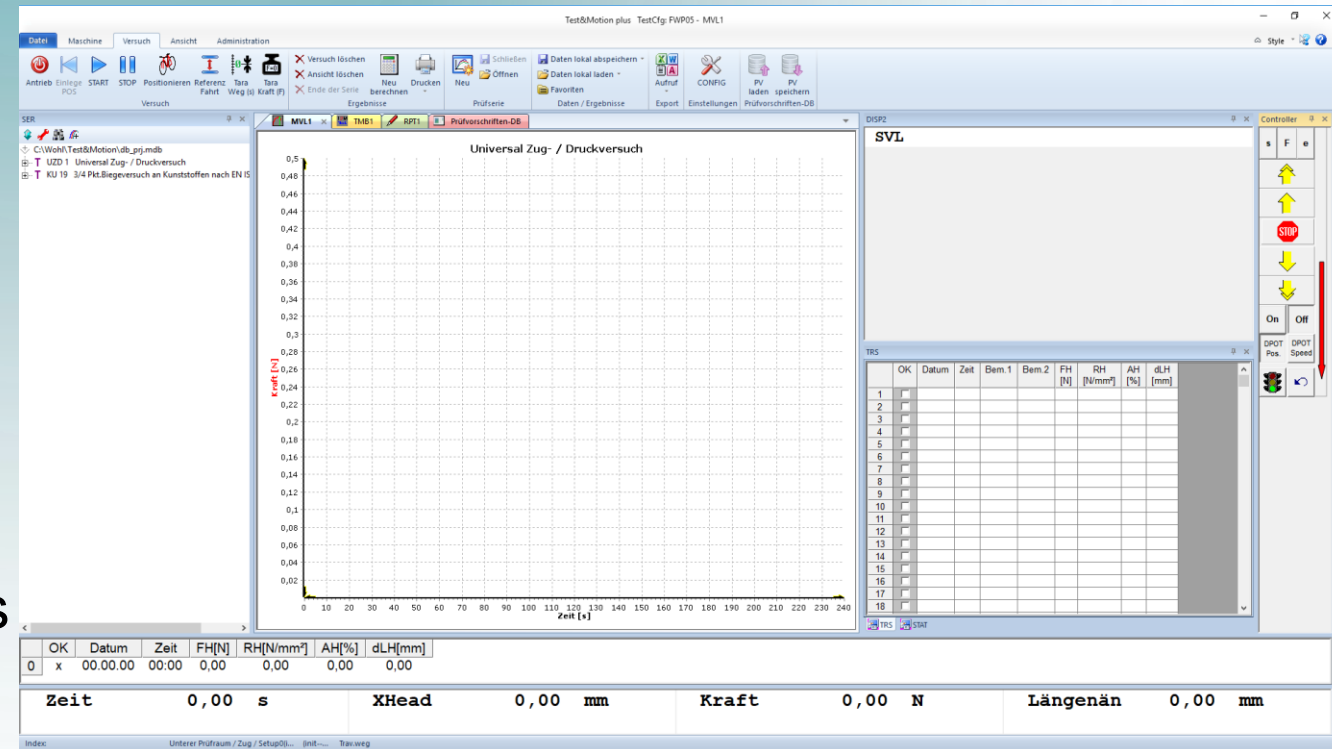
OUR DIGITAL CONTROLLER

- universal and powerful
- safe and efficient
- higher system clock
- intelligent sensor connector
- Sensors easily replaceable
- static and dynamic

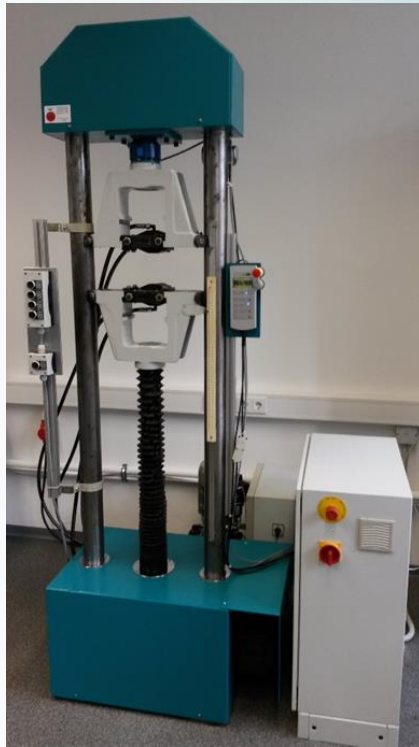


OUR SOFTWARE

- Flexible measurement technology
- Sandbox system
- External security key
- Compatible with almost all databases
- High flexibility
- Support with fixed contact persons
- free export possible



MODERNISATION



- cost efficient solution
- fullfill there daily work since and for many years
- hydraulic
- electric
- mechanic





Member of  **infraTest**
TESTING SYSTEMS

LET'S WORK TOGETHER

Phone: +49 (0)36766 2950

E-Mail: info@wohl-partner.de

Website: wohl-partner.de